



Metropolitan Beaches Commission
The State House
Boston, Massachusetts 02133



A Bay State Without Beaches?

**Adapting and Enhancing our Coast in the Face of Climate
Change and Sea Level Rise**

March 14, 2024



Save the Harbor/Save the Bay's Mission

As the region's leading voice for clean water and continued public investment in Boston Harbor, the region's public beaches, and the Boston Harbor Islands, our mission is to restore and protect Boston Harbor, Massachusetts Bay and the marine environment and share them with the public for everyone to enjoy.

Voice for Clean Water



Harbor, Islands, Beaches



New Destinations



38 Years of Success!

Public Engagement



SAVE THE HARBOR

SAVE THE BAY

Metropolitan Beaches Commission

- Improving the Boston Harbor Region's public beaches from Nahant on the North Shore to Nantasket on the South Shore.
- Strengthen Greater Boston's waterfront neighborhoods and beachfront communities





Describe your ideal beach day!



Revere Coastal Infrastructure



Potential Hurricane Inundation Zones



Revere Coastal Infrastructure



Potential Hurricane Inundation Zones



Breakout Groups Instructions

- 1. Choose a notetaker and a presenter**
- 2. Answer the following questions**
 - a. What aspects of the beach do you want to see prioritized as we adapt to a changing coast?**
- 3. Presenter Report Back Highlights to Full Group**

QR Code to Google Form:



Next Steps

As we do more conversations with people in Revere...

- 1. Who isn't here that we should talk to?**
- 2. Where should we go to meet people in Revere?**

Possible Ideas:

1. **Swimming/Water Sports**
2. **Walking the sand/boardwalk**
3. **Wildlife**
4. **Land Protection/Flood reduction**
5. **Views/Photography**
6. **Green Space/Open Space**
7. **Stormwater management**

QR Code to Google Form:



SAVE THE HARBOR

SAVE THE BAY

Thank You!



State Level Efforts

New 'ResilientCoasts' initiative

- Coastal Resilient Districts
- Will be led by Chief Coastal Resilience Officer in Department of Coastal Zone Management
- Goal is to address climate change along the coast of MA
- MBC Process (what we do today) will help inform this effort



Revere City Level Efforts

- Route 1A South Bound Roadway Infrastructure Improvement Project
- The Saugus Pines River Advocacy for Regional Resilience (SPRARR) was established in 2021 to develop a regional plan for future coastal conditions and to build resilience in the area's most vulnerable locations.


City of Revere

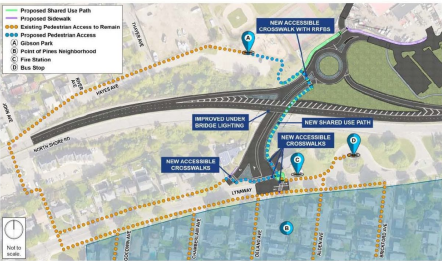
RiverFront Masterplan RT 1A South Bound Roadway Improvement Project


The RiverFront Masterplan

Will improve the connectivity, environmental resiliency, and public access to the RiverFront from RT 1A North Shore Road, the Point of Pines, and Riverside neighborhoods. The **Route 1A South Bound RiverFront Roadway Infrastructure Improvements** proposed for the area:

- Will minimize traffic impacts on the Riverside and Point of Pines neighborhoods.
- Will improve emergency vehicle access and responding times to and from the Point of Pines Area.
- Will connect all road users to Gibson Park and Gibson Point.
- Will provide safe and accessible bicycle and pedestrian access to Gibson Park.

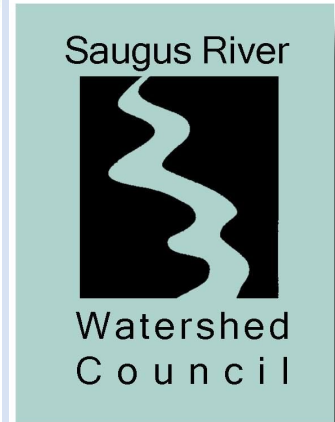






June '22	May '23	Feb '24	June '24	'24-25
Designs Initiated	25% Designs Complete	75% Designs Complete	100% Designs Complete	Construction Begins

For more information about the RT 1A South Bound Roadway Infrastructure Improvement Project and RiverFront Master Plan visit the City of Revere's Department of Planning and Community Development at www.revere.org/business-development/planning-initiatives.



Revere City Level Efforts

- Plans addressing climate change:
 - Gibson Park Resiliency and Recreation Project
 - Resilient Bennington St & Fredericks Park, Boston/Revere
 - Saugus River Watershed Regional Adaptation Planning
 - Coastal Resilience Feasibility Study for Riverside and Point of Pines - MVP Action Grant



Gibson Park Resiliency and Recreation Project

Cobble Berms



A mound of cobble-sized sediment typically constructed at the base of a coastal bank or to enhance a coastal dune to reinforce and protect it from erosion caused by waves and storms.

Benefits:

- Dissipates wave energy
- Reduces or stops dune erosion
- Additional defense layer
- Shore stability
- Current berms in Winthrop, Duxbury, Falmouth and others

Sea Walls



Built parallel to the shore to protect inland area from wave action and coastal erosion

- Hardscape
- Protects against high storm surge, incremental sea level rise
- Limits distance inland water and beach can move
- Can cause increased erosion to beach in front of sea wall

Source: The Sea Wall in Revere (RogerH4, Nov 2009, Trip Advisor)

Living Sea Walls



Source: <https://earthshotprize.org/winners-finalists/living-seawalls/>

Living Sea Walls - Modify flat, featureless marine construction (seawalls) to increase life and ecosystem diversity

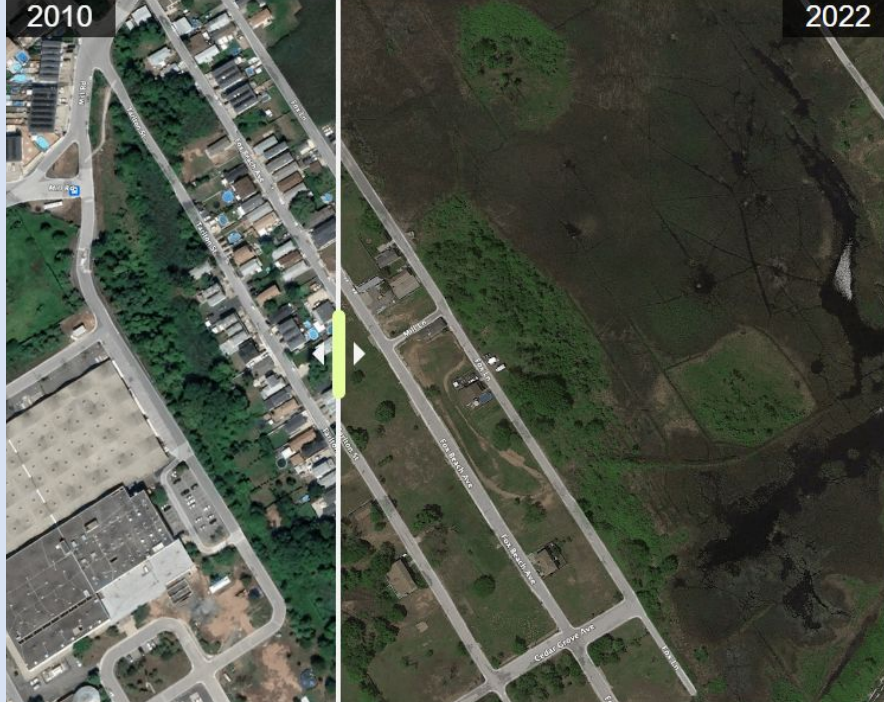
- Can be modular to modify new or existing construction
- Has shown 36% increase in marine life in 2 years
- Turns existing, problematic hardscape into part of the solution



Large Seawalls



Property Buy Back Programs



Property Buy Back Programs - the changing coast and ideally plan far in advance to transition built environment to nature.

- Proactively move people and infrastructure out of harm's way
- Minimize costs and inconveniences
- Maximize benefits to property owners and ecosystem
- Requires significant planning and investment
- Oakwood Beach, Staten Island
- Imperial Beach, California

SOURCE: "Left Behind: What life is like for the last residents of Staten Island's Oakwood Beach, Grist, 2022"